

ROSENQVIST RAIL

Product Catalogue



CLIP DRIVERS

SLEEPER HANDLING

RAIL TRAILERS

RAIL HANDLING

We develop, manufacture, and sell equipment designed to streamline railway construction and maintenance. Our smart solutions increase productivity, reduce working hours, and improve safety for those working on the railway.



Content

Our Clip Drivers and Their Applications 4

Clip drivers

CD100 B 6

CD100 8

CD200 IQ 10

CD400 16

CD400SP IQ 18

Sleeper Replacers

SB40 20

SB60 22

SB60 Automaster 24

Automaster 26

Sleeper Grapple

SG60 28

Sleeper Layers

SL400/SL450 30

SL550 32

SL650 34

SL850 36

Rail Trailers

RT3230 / RT3235 38

Rail Grapples

RG2500 / RG3000 /
RG4800 40

Three Decades of Innovation in Railway Maintenance:

A Legacy in Motion

Rosenqvist Rail – where innovation meets dedication. When the company was founded in 1985 by Anders Rosenqvist, our journey began with a mission to improve the efficiency of railway maintenance in Sweden through service solutions. After nine years of growth, Anders envisioned a new phase—one focused on transforming ideas into tangible products. Thus, our company was born in 1994, marking the start of an exciting new chapter.

Our breakthrough came with the introduction of the Pandrol Fastclip fastening system, which was discovered through the work of our sister company in Norway. Recognizing the need for more efficient tools, we developed the iconic “Clip Driver 400,” which revolutionized track maintenance with its seamless clipping capabilities. Throughout the 1990s, we expanded our product range, including track-adapted excavators and road-rail converted machinery.

This approach quickly gained traction across Scandinavia, setting a new industry standard for efficiency.

After more than 30 years in the industry, we continue to reflect on our heritage of innovation and our commitment to increasing productivity in railway maintenance. Join us as we shape the future of track maintenance with our groundbreaking products and solutions.

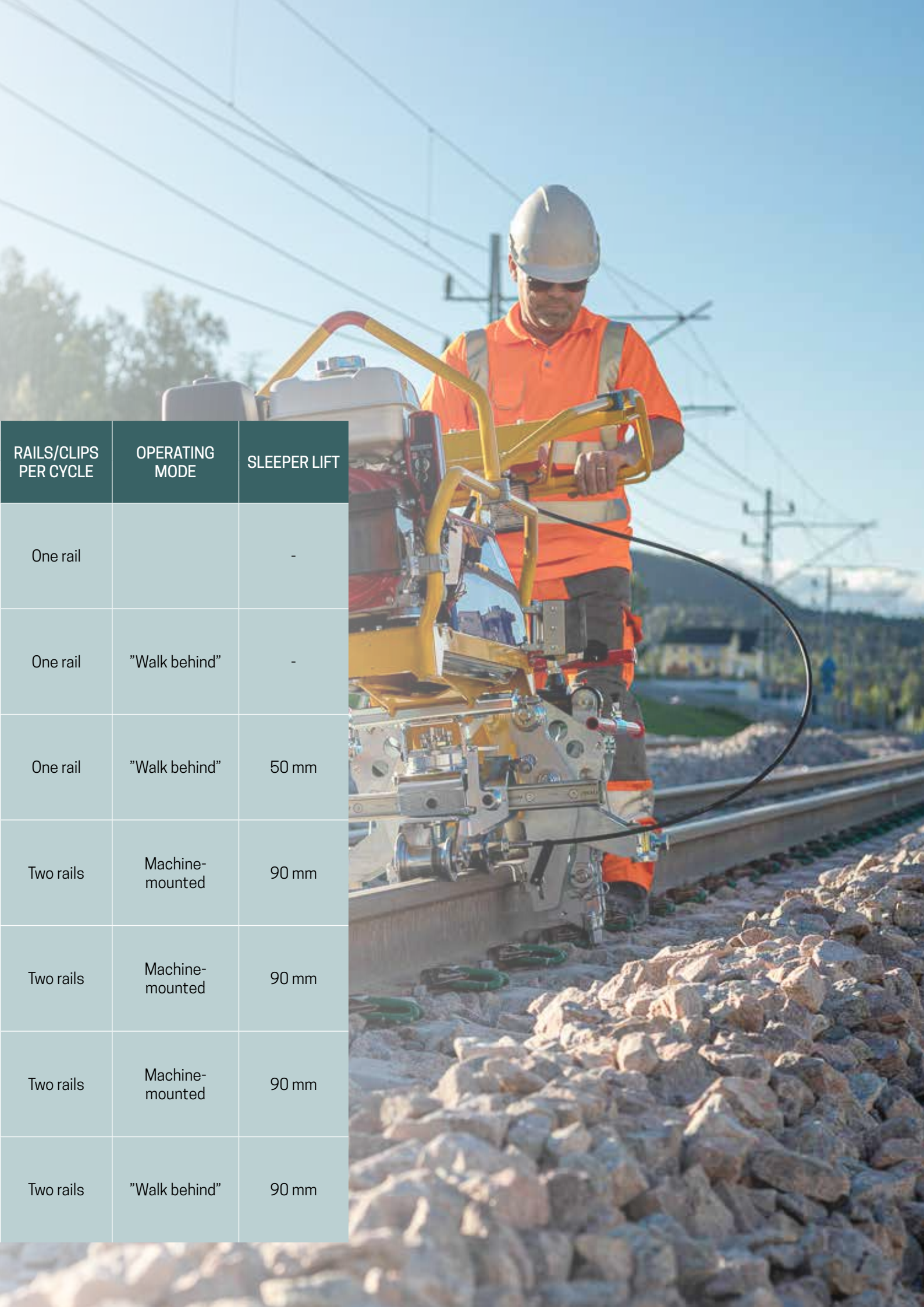
ROSENQVIST RAIL

Our Clip Drivers and Their Applications

Clip driving machines for all types of railway work, tailored to meet your specific needs. The CD100 models are best suited for lighter maintenance work, such as turnout replacement, where clips need to be quickly and easily installed and removed. The CD400 models are built for long shifts in demanding environments, making them ideal for large-scale maintenance and new construction projects.

The table below shows which applications are best matched to each product and usage scenario.

MODEL	APPLICATION	SLEEPERS/ MIN	CLIP TYPES						TRACK GAUGE
			FC	FE	FCX	E-CLIP	PR401	OFFSET CLIPS	
CD100B	Maintenance	Up to 10	✓	✓	✓				-
CD100	Maintenance	Up to 10	✓	✓	✓				-
CD200 IQ	Maintenance / Construction	Up to 20 (FC, FE, FCX) Up to 10 (e-clip, PR401)	✓	✓	✓	✓	✓	FC clips	Adjustable 1000–1600 mm (others on request)
CD300 IQ	Maintenance / Construction	Up to 40 (FC, FE, FCX) Up to 20 (e-clip, PR401)	✓	✓	✓				1435 mm
CD300 EC	Maintenance / Construction	Up to 40 (FC, FE, FCX) Up to 20 (e-clip, PR401)				✓	✓	e-clips	1435 mm
CD400	Maintenance / Construction High-capacity	Up to 40 (FC, FE, FCX) Up to 20 (e-clip, PR401)	✓	✓	✓	✓	✓	e-clips	1000, 1067, 1435, 1520, 1600 mm (others on request)
CD400SP IQ	Maintenance / Construction High-capacity	Up to 25 (FC, FE, FCX) Up to 20 (e-clip, PR401)	✓	✓	✓	✓	✓	e-clips	1000, 1067, 1435, 1520, 1600 mm (others on request)



RAILS/CLIPS PER CYCLE	OPERATING MODE	SLEEPER LIFT
One rail		-
One rail	"Walk behind"	-
One rail	"Walk behind"	50 mm
Two rails	Machine-mounted	90 mm
Two rails	Machine-mounted	90 mm
Two rails	Machine-mounted	90 mm
Two rails	"Walk behind"	90 mm

CD100 B



Efficient and safe

Quick tool changes save time and reduce risk of injury.



Eco-friendly operation

Battery-powered, zero emissions, low noise – ideal for tunnels and urban areas.



Compact and portable

Lightweight design allows solo transport and handling.



Ergonomic design

Adjustable handle and support wheels reduce operator fatigue.

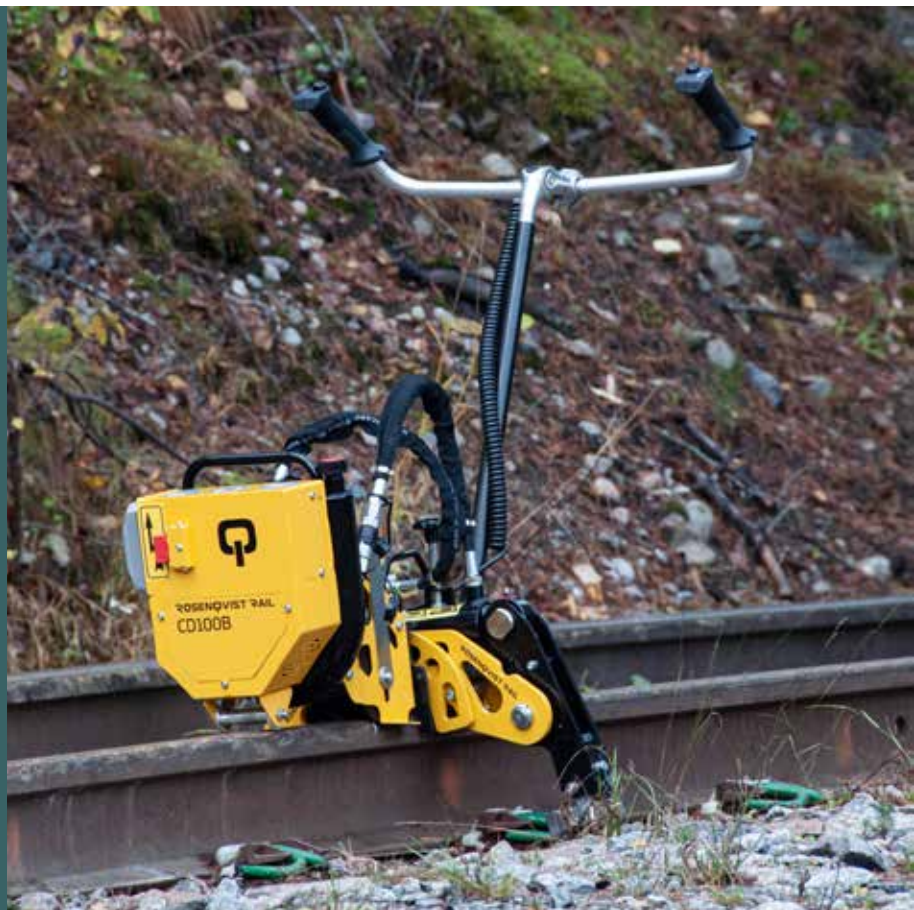
CD100B – Battery-Powered Clip Driver

Ultimate tool for railway maintenance.

Compact, lightweight, and highly efficient, the battery-powered CD100B offers eco-friendly operation with zero emissions and low noise levels. This makes it ideal for sensitive environments such as populated areas and tunnels.

Its ergonomic design, adjustable handle, and load-reducing support wheels minimize operator strain and improve workplace safety.

Quick-change couplings allow for fast switching between clipping and declipping tools, saving time and increasing flexibility. By replacing manual tools, the CD100B not only boosts productivity but also reduces the risk of work-related injuries. An indispensable tool for safe, efficient, and sustainable maintenance of the Pandrol Fastclip system.



Find more information about CD100 B on our website.



Technical Info



Main Components

- | | |
|------------------------------------|-------------------------------|
| 1. Battery-powered drive unit | 5. Fastening tool (FC/FE/FCX) |
| 2. Load-reducing support wheel | 6. Declipping tool (FE/FCX) |
| 3. Quick coupling for tool changes | 7. Declipping tool (FC full) |
| 4. Adjustable handle | |

TECHNICAL DATA				
Description	CD100 B Power Unit	Fastening Tool FC/FE/FCX	Declipping Tool FE/FCX	Declipping Tool FC Full
Weight	19 kg	24 kg	29 kg	24 kg
Length	480 mm	580 mm	560 mm	560 mm
Width	260 mm	210 mm	371 mm	270 mm
Height	400 mm	390 mm	450 mm	400 mm
Max Force	-	33,8 kN	23,9 kN	23,9 kN
Capacity	300 clipping cycles	~10 sleepers/min	~10 sleepers/min	~10 sleepers/min
Battery Capacity	6 Ah - 82 V (charger incl.)	-	-	-

CD100



Efficient operation

Powerful motor and quick-change tools for smooth work.



Safe and reliable

Replaces manual tools for greater precision and reduced risk of accidents.



Compact and lightweight

Easy to handle and transport, reduces time and costs.



Ergonomic design

Adjustable handle and support wheel improve working conditions.

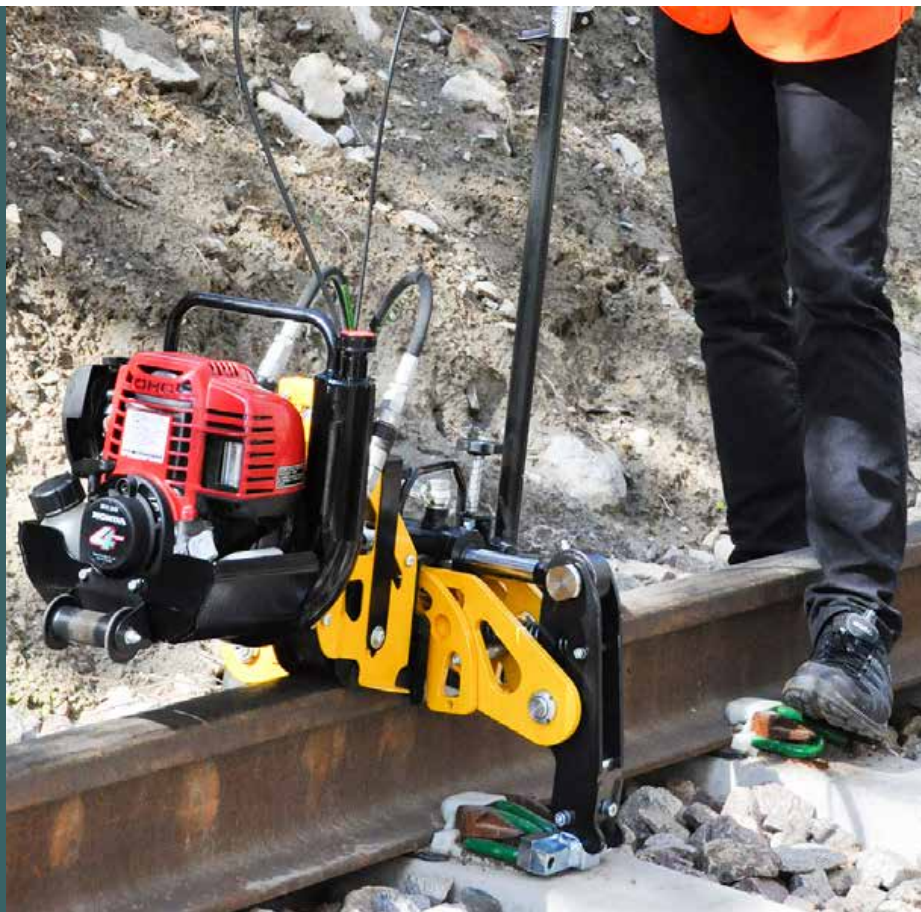
CD100 – Compact Clip Driver

Smart and efficient solution for clip installation and removal

The CD100 is the perfect tool for fast and efficient railway maintenance. Its compact design and low weight make it easy to transport and handle, saving time and simplifying work on site.

Equipped with a powerful motor and quick-change couplings, the CD100 easily switches between fastening and declipping tools, offering great flexibility for various tasks.

The adjustable handle and support wheel reduce physical strain, allowing for comfortable and safe operation. By replacing manual tools, the CD100 boosts productivity and lowers the risk of injury. A reliable solution for those who want to work faster, safer, and more cost-effectively!



Find more information about CD100 on our website.



Technical Info



Main Components

- | | |
|------------------------------------|-------------------------------|
| 1. Drive unit | 4. Adjustable handle |
| 2. Load-reducing support wheel | 5. Fastening tool (FC/FE/FCX) |
| 3. Quick coupling for tool changes | 6. Declipping tool (FE/FCX) |
| | 7. Declipping tool (FC full) |

TECHNICAL DATA				
Description	CD100 Power Unit	Fastening Tool FC/FE/FCX	Declipping Tool FE/FCX	Declipping Tool FC/FCX Full
Weight	16 kg	24 kg	29 kg	24 kg
Length	480 mm	580 mm	560 mm	560 mm
Width	260 mm	210 mm	371 mm	270 mm
Height	400 mm	390 mm	450 mm	400 mm
Max Force	-	33,8 kN	23,9 kN	23,9 kN
Capacity	-	~10 sleepers/min	~10 sleepers/min	~10 sleepers/min

CD200 IQ



High capacity

Handles up to 20 sleepers per minute, maximizing fastening efficiency.



Automated precision

Ensures safe and accurate fastening of various clip types, including Pandrol Fastclip and E-clip.



Ergonomic design

Built to reduce operator fatigue and improve working comfort.



Robust design

Engineered for demanding railway environments with long service life and minimal maintenance.

CD200 IQ – Intelligent Clip Driver

A smart and efficient solution for safe and time-saving clip installation

The CD200 IQ is a smart and efficient solution for rapid clip installation and removal. With automated features and intuitive controls, it ensures safe and time-saving operation for trackside crews.

Capable of handling up to 20 sleepers per minute, the CD200 IQ significantly boosts productivity compared to manual methods. Its robust design and high precision allow it to perform reliably under tough conditions while minimizing downtime.

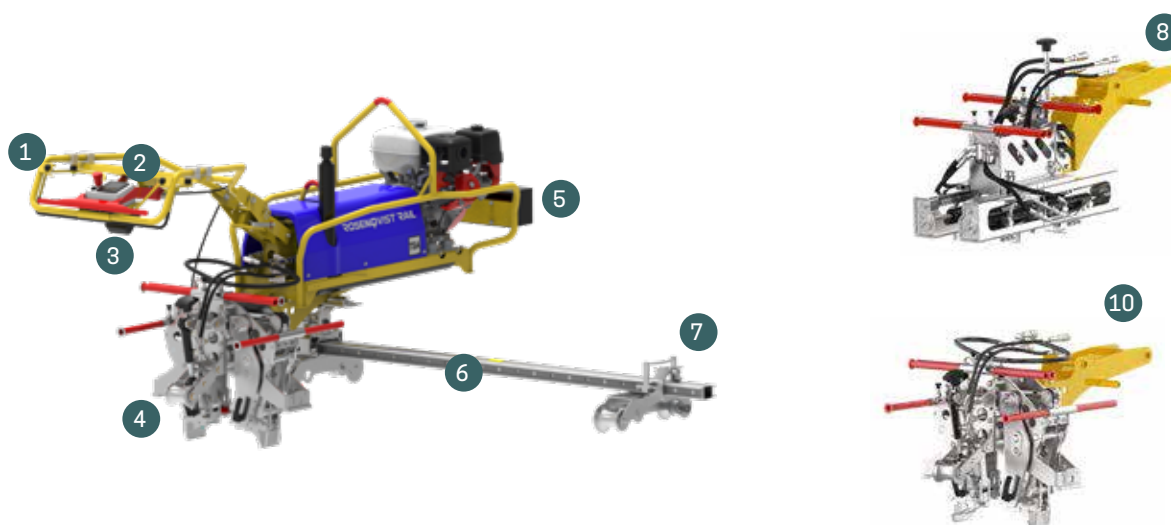
It's the perfect tool for railway teams seeking a high-performing and dependable solution for clip installation—developed to meet today's demands for safety and efficiency in rail maintenance.



Find more information about CD200 IQ on our website.



Technical Info



Main Components

- | | |
|-----------------------------------|-------------------------|
| 1. Adjustable control handle | 7. Lock handle for beam |
| 2. Control panel with display | 8. E-clip tool |
| 3. Work light | 9. Fastclip tool |
| 4. Tool head | |
| 5. Tool box | |
| 6. Rail trolley with sliding beam | |

Accessories

- Brake
- Sleeper Lift

TECHNICAL DATA				
Description		CD200 IQ Fastclip	CD200 IQ e-clip	
Mått	Length	2202 mm		
	Width	2111 mm		
	Height	1142 mm	1103 mm	
	Power Unit Weight	103 kg		
	Rail Trolley Weight	54 kg		
	Tool Weight	97 kg	115 kg	
Prestanda	Track Gauge	1000, 1067, 1435, 1520, 1570, 1600		
	Rail Cant	1:20, 1:30, 1:40		
	Operation per Cycle	2 clips per cykel		
	Capacity	Upp till 20 slipers/min	Upp till 10 slipers/min	
	Sleeper Lift	< 50 mm		
Engine	Model	Honda GX 270		
	Typ	Honda GX 270, air-cooled, 4-stroke, OHV, 8.5 HP (6.3 kW) @ 3600 rpm		
	Fuel	Unleaded gasoline		
Electrical System	Voltage	12 Volt DC		
Hydraulic System	Pump Type	Gear pump, 17 L/min, max 215 bar (with boost function)		
Noise Level	Idle / Full throttle	69 dB (A) / 91 dB (A)		
Vibration Level	Clipping	4,31 m/s ²		
	De-clipping	4,65 m/s ²		
Electrical Safety Class		IP64		

CD300 IQ



High capacity

Installs and extracts clips on up to 40 sleepers per minute, saving time and effort.



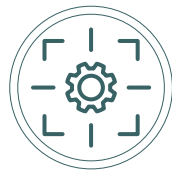
User-friendly interface

Digital display for monitoring cycles, runtime, and troubleshooting.



Intelligent control system

Automatically optimizes cycles to protect clips, shoulders, and insulators.



Automated precision

Lifting tools and quick height adjustments for 50 kg and 60 kg rails.

CD300 IQ – Smart, Fast, Precise

Advanced Clip Driver with Intelligent Control

The CD300 IQ is a high-capacity, intelligent clip driver that combines powerful performance with precision automation. With a capacity of up to 40 sleepers per minute, it handles large-scale projects with ease.

The intelligent control system optimizes each work cycle to ensure perfect results while protecting clips, shoulders, and insulators. The sleeper lift function allows easy handling of low-set sleepers, and the intuitive digital display gives operators full control over performance and diagnostics.

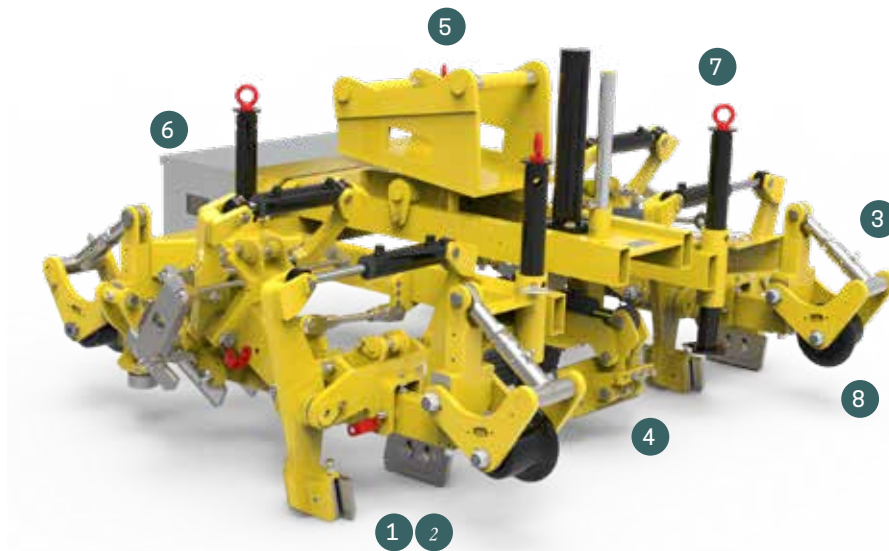
With its robust design and proven technology, CD300 IQ is the go-to solution for efficient and accurate rail fastening.



Find more information about
CD300 IQ on our website.



Technical Info



Main Components CD300 IQ

- | | | |
|----------------------|--------------------|-----------------|
| 1. Lifiable tools | 4. Sleeper lift | 7. Support legs |
| 2. Automation sensor | 5. Machine bracket | 8. Rail wheels |
| 3. Height adjustment | 6. Tool box | |

TECHNICAL DATA	
Specification	CD300 IQ
Clip Types	FC, FE
Clips per Cycle	4 (fastening and declipping)
Capacity	Up to 40 sleepers/min
Sleeper Lift	90 mm
Width	2250 mm
Length	1730 mm
Height	1030 mm
Weight	990 kg
Rail Wheels Diameter	Ø 125 mm
Track Gauge	1435 mm

ACCESSORIES	
5014482	S45 Machine bracket
5014954	S50 Machine bracket
5015480	S60 Machine bracket
5015528	Bluetooth module
On request	Forklift lifting bracket

CD300 EC



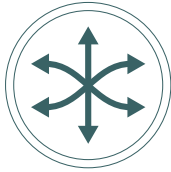
High capacity

Handles up to 20 sleepers per minute for efficient E-clip and PR-clip work.



Lightweight construction

Easy to transport and maneuver in the field.



Flexible operation

Adjustable height and sleeper lift for different rail profiles and job conditions.



Robust design

Designed for tough environments with low maintenance needs.

CD300 EC – Efficient, Robust, Reliable Flexible Clip Driver for E-Clips and PR Clips

The CD300 EC is a dependable and versatile clip driver, ideal for working with E-clips and PR clips. With a capacity of up to 20 sleepers per minute, it delivers both efficiency and precision in demanding environments.

Its adjustable height and sleeper lift ensure smooth adaptation to various rail types and working conditions. The lightweight yet robust design makes the CD300 EC easy to transport and operate, while requiring minimal maintenance.

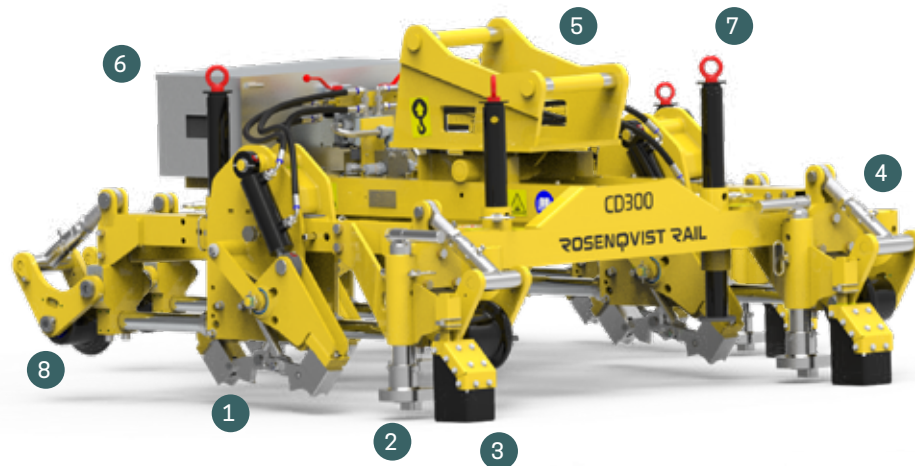
For railway projects that demand reliability and adaptability, the CD300 EC is the perfect tool.



Find more information about
CD300 EC on our website.



Technical Info



Main Components CD300 EC

- | | |
|----------------------|-----------------|
| 1. Fastening tool | 6. Tool box |
| 2. Declipping tool | 7. Support legs |
| 3. Clip catcher | 8. Rail wheels |
| 4. Height adjustment | |
| 5. Machine bracket | |

TECHNICAL DATA	
Specification	CD300 EC
Clip Types	E-clip, PR clip
Clips per Cycle	4 fastening, 2 declipping
Capacity	Up to 20 sleepers/min
Width	2250 mm
Length	1730 mm
Height	1030 mm
Weight	840 kg
Rail Wheels Diameter	Ø125 mm
Track Gauge	1435 mm

ACCESSORIES	
5014482	S45 Machine bracket
5014954	S50 Machine bracket
5015480	S60 Machine bracket
On request	Forklift lifting bracket

CD400



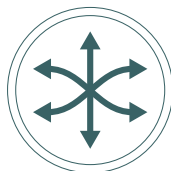
High Capacity

Installs and extracts clips on up to 40 sleepers per minute for maximum productivity.



Automatic precision

Fully automated cycles ensure correct handling of clips and shoulders.



Versatile functionality

Compatible with both Fastclip and E-clip systems, with adjustable gauge.



Robust design

Engineered for demanding environments with excellent operational reliability.

CD400 – Capacity, Precision, Reliability

High-Performance Clip Driver for Demanding Railway Projects

The CD400 is a powerful solution for large and complex railway projects. With the ability to install and extract up to 40 sleepers per minute, it handles high volumes with unmatched efficiency and accuracy.

Its versatility allows it to switch easily between Fastclip and E-clip systems, and the adjustable track gauge ensures compatibility with various rail profiles. Fully automated operation guarantees precise results while protecting the integrity of the clips and shoulders.

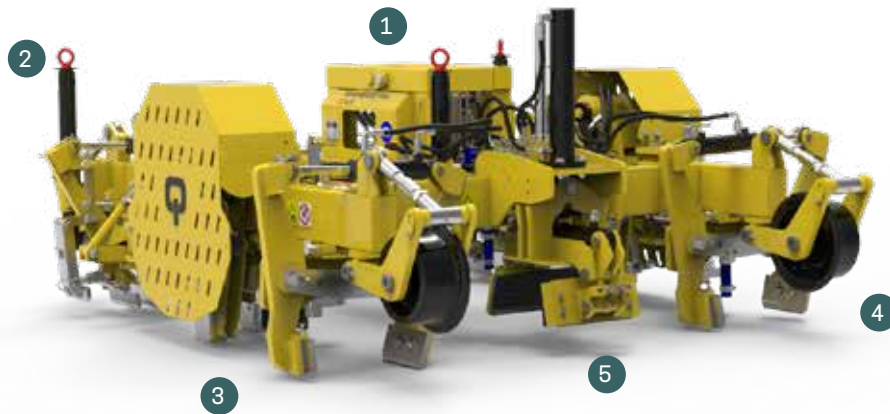
Designed for tough conditions, the CD400's robust build minimizes downtime and maintenance needs. For those seeking reliability and performance in railway maintenance, the CD400 is the ultimate choice.



Find more information about CD400 on our website.



Technical Info



Main Components

- | | |
|--------------------|-----------------|
| 1. Machine bracket | 4. Rail wheels |
| 2. Support legs | 5. Sleeper lift |
| 3. Tools | |

TECHNICAL DATA		
Specification	Fastclip	E-clip
Clip Types	FE, FC, FCX	E-clip, PR401
Clipping	4 Clips per Cycle	
De-clipping	4 Clips per Cycle	2 Clips per Cycle
Offset Clip Capability	Yes	
Capacity	Up to 40 sleepers/min	Up to 20 sleepers/min
Sleeper Lift	90 mm	
Width	2100 mm	
Length	2500 mm	
Height (from rail head)	870 mm	
Weight (fully equipped)	1740 kg	
Rail Wheels Diameter	Ø 250 mm	
Track Gauge Options	1000, 1067, 1435, 1520, 1600 mm	

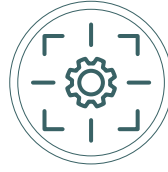
ACCESSORIES	
5001021S	Clipping tools e-Clips standard
5002484S	Safety cage
5006362S	Safety cage for offset tool
5002775S	Declipping tool e-Clips
5004661S	Clipping/declipping tool offset clips
5007295	e-Clip shoe offset
5003290	e-Clip shoe standard
5003280	e-Clip shoe
5006717	Spacer 56 mm e-Clip offset/standard
5003090	PR 400 series
5003248	S45 machine bracket
5003463	S60 machine bracket
On request	Universal bracket
5006510	For fitting the machine in a boom or equivalent

CD400SP IQ



High Capacity

Installs and extracts clips on up to 25 sleepers per minute with accuracy.



Automatic precision

Intelligent automation ensures consistent clip handling and component protection.



Remote control

Intuitive operation from a safe distance enhances workplace safety.



Quiet and eco-friendly

Low sound levels and optimized emissions for a better work environment.

CD400SP IQ – Remote-Controlled, Intelligent, Connected

Advanced Clip Driver with Maximum Safety and Control

The CD400SP IQ is a high-performance, remote-controlled clipping machine for railway maintenance and construction, delivering up to 25 sleepers per minute with precision.

Its intuitive remote control enhances operator safety, while the automated control system ensures accurate and repeatable cycles — protecting clips and shoulders.

With built-in IoT capabilities, the CD400SP IQ offers real-time monitoring, remote diagnostics, and Fleet Management access for maintenance planning, performance tracking, and software updates.

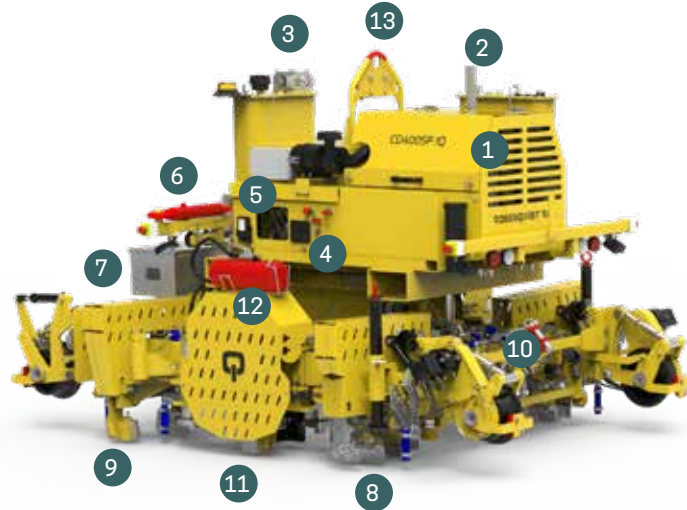
Low noise levels and a Stage V diesel engine support sustainable operation, and the machine's robust design ensures reliable performance in demanding conditions.



Find more information about CD400SP IQ on our website.



Technical Info



Main Components

- | | | |
|-----------------------|-------------------------------|-----------------------------------|
| 1. Engine | 6. Tow bar | 11. E-clip module with declipping |
| 2. Diesel tank | 7. Tool box | 12. Fire extinguisher (optional) |
| 3. Hydraulic oil tank | 8. Emergency pump | 13. Lifting point |
| 4. Display | 9. Declipping tool (Fastclip) | |
| 5. Emergency controls | 10. Fastening tool (Fastclip) | |

TECHNICAL DATA	
Length	3220 mm
Height (working/ transport mode)	1830 mm / 2110 mm
Width	2290 mm
Weight	3075 kg
Track Gauges	1000, 1067, 1435, 1520, 1600 mm (others on request)
Rail Wheels	S1002 profile, Ø 250 mm
Clipping	4 Clips per cycle
De-clipping	4 Clips per cycle (Fastclip) 2 Clips per cycle (E-clip)
Capacity	Up to 25 sleepers/min
Sleeper Lift	90 mm
Electrical System	24 V
Hydraulic System	Load Sensing, max 200 bar
Engine	EU Stage V Hatz diesel, 3H50T, 70L tank
Hydraulic Oil Tank	70 liters
Braking Distance	Max 5 meters
Noise Level (at 1m distance)	75-78.5 dB(A) depending on side



SB40



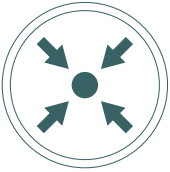
Efficient sleeper handling

Manages everything from ballast excavation to sleeper installation.



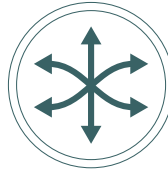
Safe design

Adjustable support rollers protect the rail and reduce risk of damage during close-track work.



Compact and versatile

Designed for 8–12 ton machines and compatible with most sleeper types.



Flexible options

Can be equipped with Automaster for clip installation.

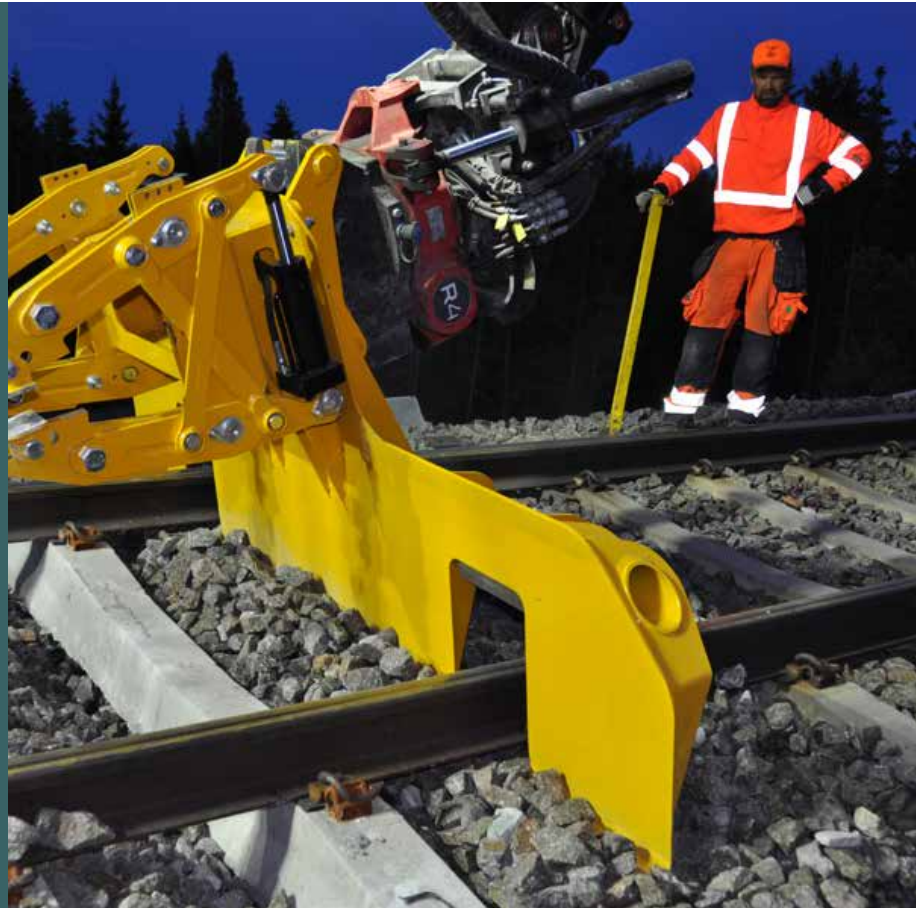
SB40 – Robust, Flexible, Safe

Compact Sleeper Changer for Efficient Track Maintenance

The SB40 is a versatile and compact sleeper changer designed to handle everything from ballast excavation to the safe installation of new sleepers. Its robust construction and adjustable support rollers protect the rails while ensuring accurate digging depth.

Designed for machines in the 8–12 ton class, the SB40 is compatible with most sleeper types and performs efficiently in various working environments. Its compact design and flexible operation make it ideal for use with tiltrotators, enhancing precision and effectiveness in confined spaces.

The SB40 can be equipped with the Automaster unit, enabling quick installation of Pandrol Fastclips. With its safety-focused design and multifunctional capabilities, SB40 is a flexible and efficient solution for railway maintenance.



Find more information about SB40 on our website.



Technical Info



Main Components

1. Ballast blade
2. Adjustable support rollers
3. Sleeper grapple

TECHNICAL DATA	
Description	SB40
Track Gauge	1435 mm
Length	1370 mm
Height	1035 mm
Width	2590 mm
Weight	530 kg
Rail Type	60 kg/m, 50 kg/m
Blade Width	2590 mm
Clamping Force	1400 kg

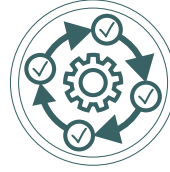
TILLBEHÖR	
Automaster	For automatic Pandrol FC and FE Fastclip installation
Machine Brackets	Various types available

SB60



Efficient sleeper handling

Executes excavation, removal, and installation of sleepers with a single tool.



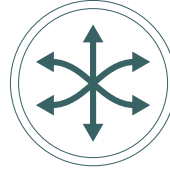
Work flexibility

Enables sleeper replacement both from the track side and in-track positions.



Robust design

Built for machines over 10 tons, handles challenging environments.



Customizable options

Can be fitted with Automaster for clip installation and buckets for ballast work and wet spots.

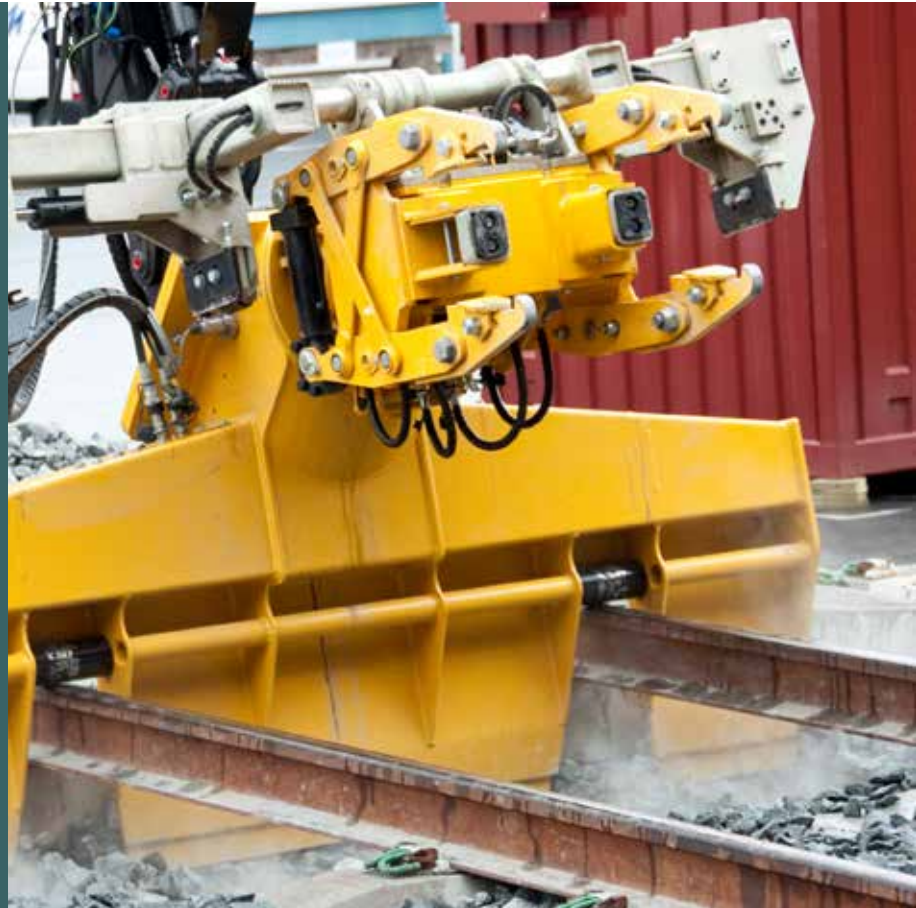
SB60 – Powerful, Flexible, Safe

Heavy-Duty Sleeper Changer for Demanding Conditions

The SB60 is a powerful and flexible sleeper changer designed to handle the toughest working environments. Its robust construction and compatibility with machines over 10 tons make it ideal for replacing sleepers either from the side of the track or directly within the track bed.

The SB60 manages the entire workflow—from ballast excavation to the safe and precise installation of new sleepers—making it a versatile and highly effective tool. For added functionality, it can be equipped with the Automaster unit for fast clip installation, as well as buckets for ballast excavation and wet spot treatment.

The SB60 is a reliable solution that combines strength, adaptability, and safety in railway maintenance and construction.



Find more information about SB60 on our website.



Technical Info



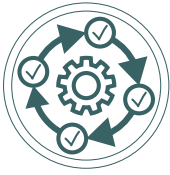
Main Components

1. Ballast blade
2. Adjustable support rollers
3. Rotator
4. Sleeper grapple

TECHNICAL DATA		
Description	SB60 Automaster	SB60 SKR
Track Gauge	1000, 1067, 1435, 1520, 1600	
Rail Type	60 kg/m, 50 kg/m	
Clamping Force	1400 kg	
Length	1684 mm	
Height	1564 mm	
Gauge	Width	
1000	2240 mm	
1067	2305 mm	
1435	2672 mm	
1520	2755 mm	
1600	2840 mm	
Gauge	Weight	
1000	945 kg	985 kg
1067	1030 kg	1070 kg
1435	1075 kg	1115 kg
1520	5095 kg	1135 kg
1600	1110 kg	1150 kg

ACCESSORIES	
Automaster	For automatic installation of Pandrol FC and FE Fastclips
Extra Buckets	For ballast digging and wet spot removal

SB60 Automaster



Complete solution

Performs both sleeper replacement and Fastclip installation in a single cycle.



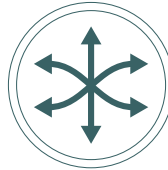
Powerful and versatile

Built for machines over 10 tons, suitable for demanding conditions.



Improved safety

Reduces the number of workers needed near the track, minimizing risks.



Flexible options

Can be equipped with buckets for ballast digging and wet spots.

SB60 Automaster – Replace, Clip, Optimize

Complete Sleeper Replacement and Fastening Solution

The SB60 Automaster is a complete and powerful solution for sleeper replacement and clip installation. Designed for machines over 10 tons, it is built to withstand the most demanding railway environments.

With SB60 Automaster, both sleeper replacement and precise Pandrol Fastclip installation are completed in a single operational cycle, streamlining workflows and reducing the need for personnel working near the track.

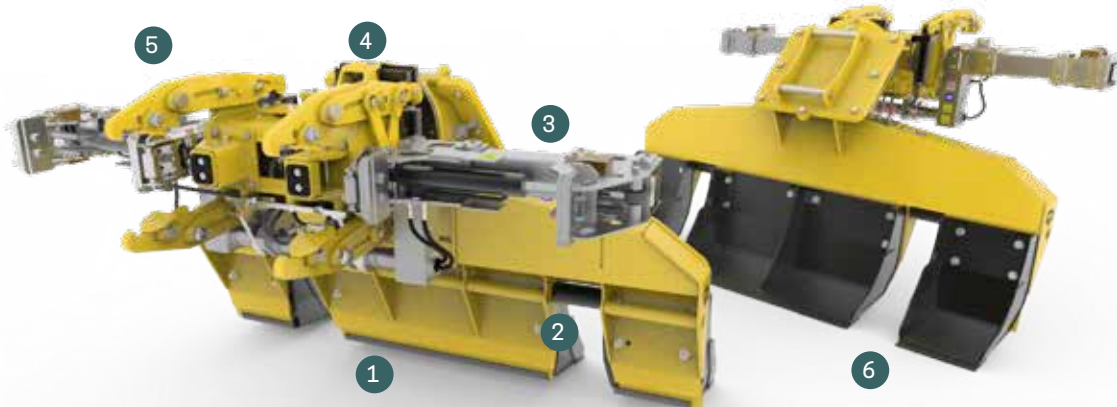
The machine is flexible and can be equipped with buckets for ballast excavation and wet spot management. Combining high performance, safety, and versatility, the SB60 Automaster is an essential tool for both railway maintenance and construction.



Find more information about SB60 Automaster on our website.



Technical Info



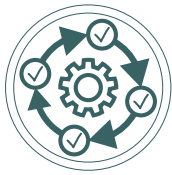
Main Components

- | | |
|-------------------------------|----------------------|
| 1. Ballast blade | 4. Worm gear rotator |
| 2. Adjustable support rollers | 5. Sleeper grapple |
| 3. Automaster clip driver | 6. Optional buckets |

TECHNICAL DATA	
Description	SB60 Automaster
Gauge	1000, 1067, 1435, 1520, 1600
Rail type	60 kg/m, 50 kg/m
Clamping force	1400 kg
Length	1684 mm
Height	1564 mm
Gauge	Width
1000	2240 mm
1067	2305 mm
1435	2672 mm
1520	2755 mm
1600	2840 mm
Gauge	Weight
1000	1245 kg
1067	1290 kg
1435	1335 kg
1520	1355 kg
1600	1370 kg

ACCESSORIES	
Automaster	Integrated fastening system for Pandrol FC and FE Fastclips
Extra buckets	For excavating ballast and wet spots

Automaster



Efficient fastening

Enables automatic Fastclip installation directly after sleeper replacement.



Enhanced safety

Reduces the need for personnel working near the track, minimizing risk.



Flexible compatibility

Easily retrofitted to SB40 and SB60 units for added functionality.



Time-saving integration

Combines sleeper replacement and fastening into a streamlined workflow.

Automaster – Precision Fastening

Automated Clip Installation for Sleeper Replacement Units

The Automaster is a powerful add-on that enables automatic installation of Pandrol Fastclips immediately after a sleeper is replaced.

Compatible with both the SB40 and SB60 sleeper changers, the Automaster streamlines the workflow by combining sleeper handling and clip installation into one efficient operation. This reduces manual intervention, increases safety, and significantly improves productivity on site.

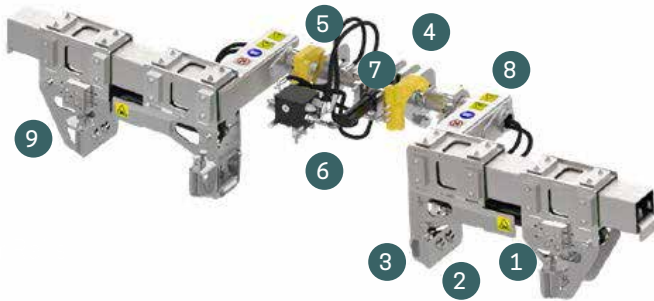
With its robust design and easy integration, the Automaster is a time-saving enhancement for any railway maintenance or construction project requiring high performance and reliability.



Find more information about Automaster on our website.



Technical Info



Main Components

- | | |
|--|------------------------------------|
| 1. Fastening cylinder | 5. Transport lock |
| 2. Fastening tool (height-adjustable +20 mm) | 6. Lifting cylinder |
| 3. Support roller (height-adjustable +20 mm) | 7. Adjustable stopper with damping |
| 4. Mounting bracket (height-adjustable in 25 mm steps) | 8. Hydraulic distribution block |

TECHNICAL DATA

Description	Automaster SB40	Automaster SB60
Dimensions	540mm x 2530mm x 495mm	540mm x 2530mm x 500mm
Weight	220 kg	260 kg
Max Rail Height	213mm	213mm
Max Tool Spread Over Rails	610mm	610mm
Clamping Force at Installation	40kN (190 bar)	40kN (190 bar)

SG60



Efficient handling

Ensures a stable grip on sleepers and short rail sections without causing damage.



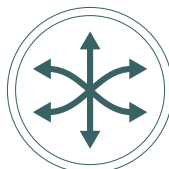
Safe working environment

Minimizes manual handling and reduces the risk of injury.



Compact and powerful

Designed for heavy lifting and easy use in confined work areas.



Flexible adaptation

Interchangeable gripping arms make SG60 compatible with most sleeper types and site conditions.

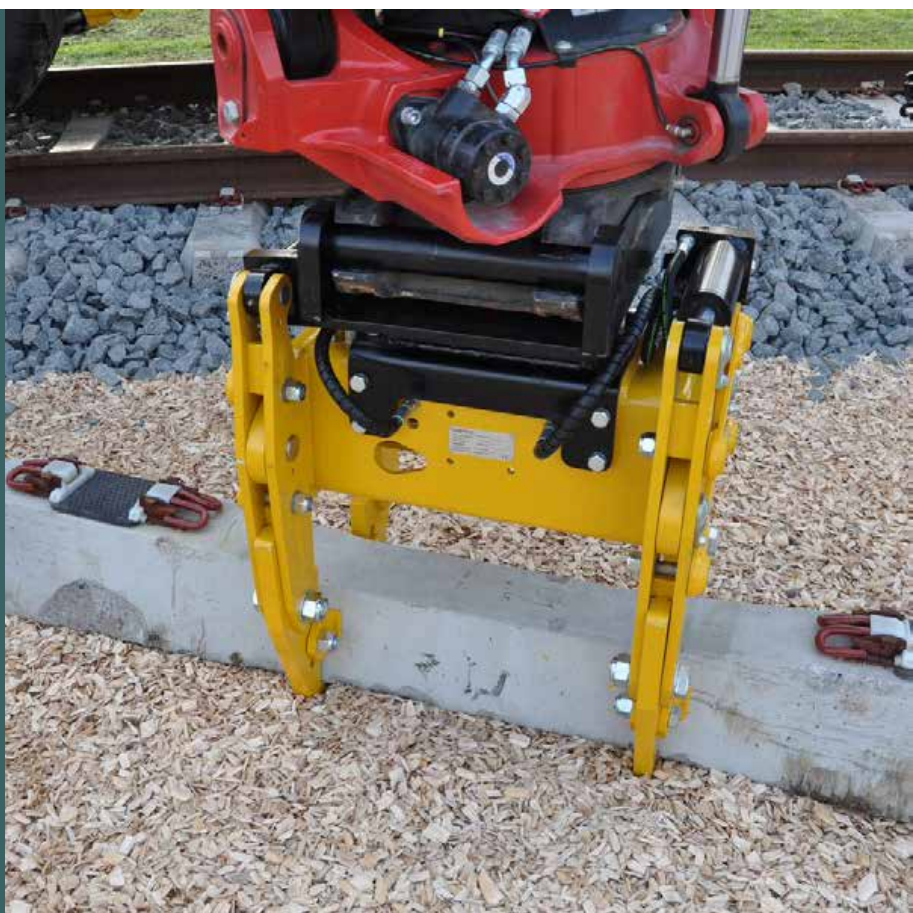
SG60 – Strong, Safe, Flexible

The Optimal Tool for Sleeper and Short Rail Handling

The SG60 is the ideal solution for handling sleepers and short rail sections during railway work. Its robust construction and powerful grip ensure stable and gentle handling, minimizing damage and enabling the reuse of components.

The compact design makes it perfect for use in tight spaces such as tunnels and bridges. By reducing the need for manual handling, the SG60 improves workplace safety and lowers the risk of personal injury.

With interchangeable gripping arms, the tool is compatible with most sleeper types, offering great flexibility and user-friendliness.



Find more information about SG60 on our website.



Technical Info



Main Components

1. Machine bracket
2. Grapple cylinder
3. Grapple arms

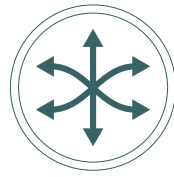
TECHNICAL DATA	
Description	SG60
Machine Bracket	Type S45, S60
Weight	305kg
Height	1128mm
Width	540mm
Hydraulics	Double-acting hydraulic outlet
Clamping Force	1400kg
Rail Type	European standard 60 kg/m, 50 kg/m

SL400/SL450



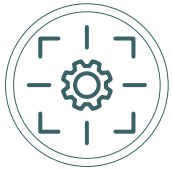
High capacity

Handles up to four sleepers at a time, placing up to 60 meters per hour.



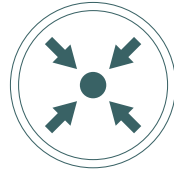
Flexible adaptation

Quick-change claws and adjustable spacing for various sleeper types and layouts.



Precision and stability

Patented linkage system ensures smooth and accurate sleeper placement.



Compact design

Telescopic frame allows use in confined spaces like tunnels and train stations.

SL400 / SL450 – Efficient, Precise, Flexible

High-Capacity Sleeper Layers for Streamlined Track Work

The SL400 and SL450 are efficient and precise sleeper layers designed to optimize workflow in track laying operations. The SL400 can handle up to four sleepers at a time and lay up to 60 meters per hour, while the SL450 offers the same capacity with added flexibility to adapt to various job site conditions.

The patented linkage design ensures stable and even placement of sleepers, improving overall track quality. Quick-change gripping claws and adjustable spacing make both models highly adaptable and compatible with most sleeper types and spacings.

Their compact, telescopic frame makes the SL400 and SL450 ideal for tight workspaces such as tunnels and station platforms. These tools provide a safe and cost-effective solution for sleeper installation.



Find more information about SL400 on our website.



Technical Info



Main Components

1. Base frame
2. Machine bracket mount
3. Telescopic frame
4. Gripping arms
5. Rotator

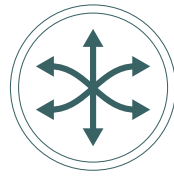
TECHNICAL DATA		
Description	SL400	SL450
Max Number of Sleepers	4 st	
Length Range	1000 – 2585 mm	1120 – 2640 mm
Height (Standard)	655 mm	780 mm
Width (Standard)	2 705 mm	2855-3170 mm
Weight	820 kg	1060 kg
Lifting Capacity	Max. 1250 kg	Max. 1800 kg
Sleeper Distance	274-750 mm	
Sleepers Length	On request	STD: 2490-2800 mm
		Smal: 2220-2530 mm
		Bred: 2490-3000 mm
Capacity with Excavator	Upp till 60m/h	
Capacity with wheel loader	Upp till 40m/h	

SL550



High capacity

SL450 hanterar upp till fyra slipers och SL550 upp till fem, med upp till 90 meter per timme.



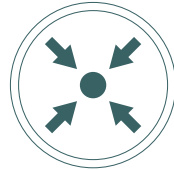
Flexible operation

Adjustable to various sleeper types and spacings.



Precision Placement

Patented linkage system ensures uniform sleeper positioning to maintain track quality.



Kompakt design

Telescopic frame allows use in confined spaces like tunnels and train stations.

SL550 – Power, Precision, Flexibility Heavy-Duty Sleeper Layer for Large-Scale Projects

The SL550 is a powerful and flexible sleeper layer designed to deliver high capacity and accuracy in sleeper installation. Capable of handling up to five sleepers simultaneously, it is ideal for high-volume projects where efficiency and precision are key.

The SL550's rugged construction ensures durability in tough work environments, while its adjustable features allow it to accommodate different sleeper types and spacings. Its design ensures consistent placement of sleepers, contributing to better long-term track performance.

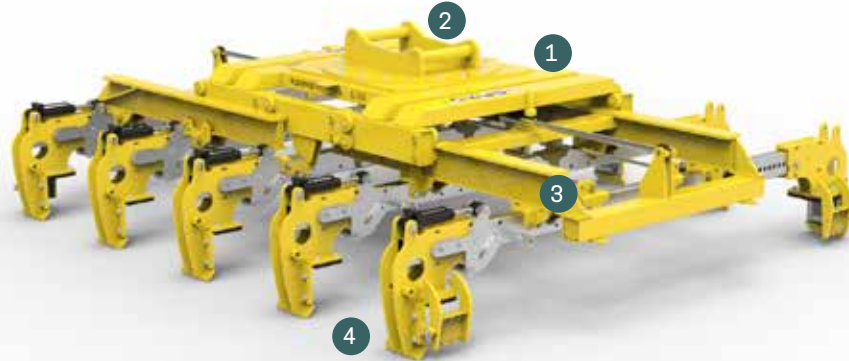
Whether used in track construction or major maintenance works, the SL550 delivers the productivity and reliability demanded by modern railway projects.



Find more information about
SL450/550 on our website.



Technical Info



Main Components

1. Base frame
2. Machine bracket mount
3. Telescopic frame
4. Gripping arms

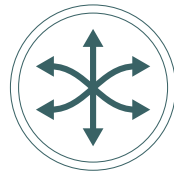
TECHNICAL DATA	
Description	SL550
Max Number of Sleepers	5 st
Length	1790 - 3770 mm
Height - Standard	945 mm
Height with tilt rotator	1400 mm
Height with tilt rotator & machine bracket (150 mm)	1550 mm
Width standard gauge	Min. 2 855 mm
	Max. 3170 mm
Width broad gauge	Min. 2965 mm
	Max. 3335 mm
Weight	1595 kg (without machine bracket)
	1670 kg (with machine bracket)
	1870 kg (with tiltrotator and machine bracket)
Lifting Capacity	Max. 2250 kg
Sleeper Distance	250-762 mm
SleeperLength	STD: 2410-2800 mm
	Narrow: 2145-2530 mm
	Broad: 2410-3000 mm
Capacity with Excavator	Up to 90 m/h
Capacity with wheel loader	Up to 60 m/h

SL650



Exceptional Capacity

Places up to 110 meters of sleepers per hour.



Flexible configuration

Adjustable spacing and quick-change claws handle various sleeper types.



Precise and stable

Patented linkage ensures consistent, exact sleeper placement.



Compact design

Telescopic frame enables use in tight workspaces.

SL650 – Robust, Accurate, High-Capacity

Advanced Sleeper Layer for Versatile Track Projects

The SL650 is a heavy-duty sleeper layer that combines robust construction with high capacity and precision. Designed to place up to six sleepers simultaneously, it is ideal for projects requiring speed, accuracy, and adaptability.

The machine's advanced linkage system and adjustable gripping arms ensure consistent and stable placement, even in varying ground conditions. Compatible with multiple sleeper types and lengths, the SL650 is a reliable choice for both new track construction and large-scale maintenance operations.

Its performance and flexibility make the SL650 a key asset for rail contractors aiming for productivity without compromising on quality.



Find more information about SL650 on our website.



Technical Info



Main Components

1. Base frame
2. Machine bracket
3. Telescopic frame
4. Gripping arms

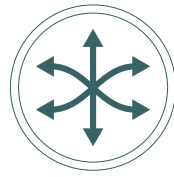
TECHNICAL DATA	
Description	SL650
Max Number of Sleepers	6 st
Length	2000 - 4475 mm
Height - Standard	945 mm
Height with tilt rotator	1400 mm
Height with tilt rotator & machine bracket (150 mm)	1550 mm
Width standard gauge	Min. 2 855 mm
	Max. 3170 mm
Width broad gauge	Min. 2965 mm
	Max. 3335 mm
Weight	1860 kg (without machine bracket)
	1935 kg (with machine bracket)
	2210 kg (with tiltrotator and machine bracket)
Lifting Capacity	Max. 2700 kg
Sleeper Distance	250-762 mm
SleeperLength	STD: 2410-2800 mm
	Narrow: 2145-2530 mm
	Broad: 2410-3000 mm
Capacity with Excavator	Up to 110 m/h
Capacity with wheel loader	Up to 75 m/h

SL850



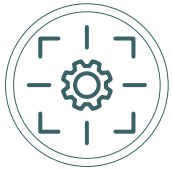
Exceptional Capacity

Lays up to 150 meters of sleepers per hour.



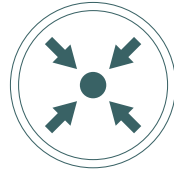
Flexible adjustment

Adjustable spacing and interchangeable gripping claws handle various sleeper types and distances.



Precision and stability

Patented linkage system ensures uniform and exact sleeper placement.



Compact design

Telescopic frame enables efficient use in confined workspaces.

SL850 – Maximum Efficiency and Strength

Sleeper Layer with Unmatched Capacity for Large-Scale Track Projects

The SL850 is Rosenqvist Rail's most powerful sleeper layer, capable of handling up to eight sleepers at a time. Built for the most demanding construction and maintenance tasks, it delivers maximum output while maintaining stability and control.

With a lifting capacity of up to 3600 kg and adjustable sleeper spacing, the SL850 offers exceptional flexibility. Its patented linkage mechanism ensures sleepers are placed evenly and accurately, even under heavy loads or in uneven terrain.

Designed for use with large excavators or wheel loaders, the SL850 is your go-to solution when speed and volume are critical without compromising on safety or precision.

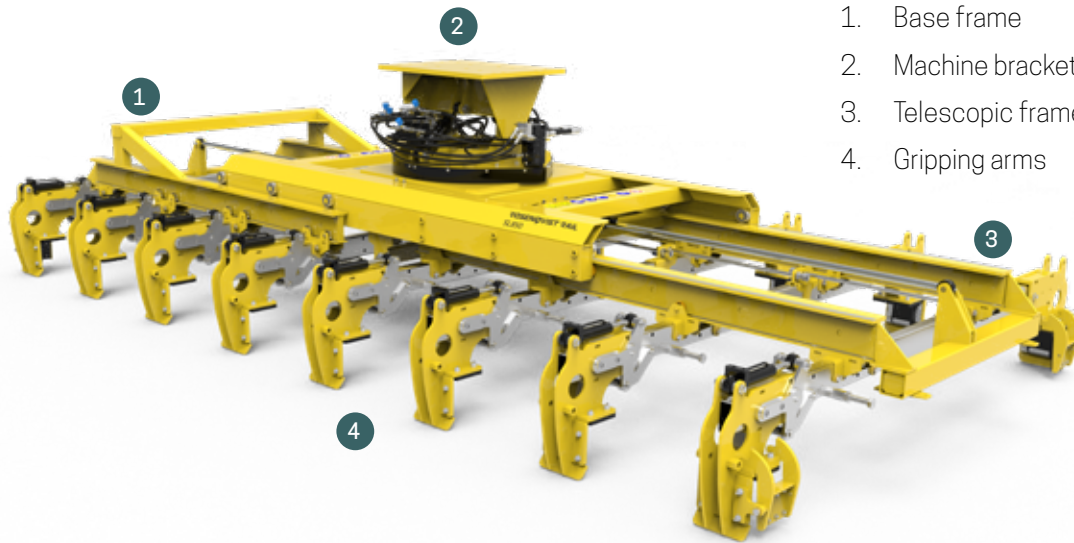


Find more information about SL850 on our website.



Technical Info

Main Components



1. Base frame
2. Machine bracket
3. Telescopic frame
4. Gripping arms

TECHNICAL DATA	
Description	SL850
Max Number of Sleepers	8 st
Length	2800 - 6015 mm
Height - Standard	945 mm
Height with tilt rotator	1400 mm
Height with tilt rotator & machine bracket (150 mm)	1550 mm
Width standard gauge	Min. 2 855 mm
	Max. 3170 mm
Width broad gauge	Min. 2965 mm
	Max. 3335 mm
Weight	2350 kg (without machine bracket)
	2425 kg (with machine bracket)
	2700 kg (with tiltrotator and machine bracket)
Lifting Capacity	Max. 3600 kg
Sleeper Distance	255-762 mm
SleeperLength	STD: 2410-2800 mm
	Smal: 2145-2530 mm
	Bred: 2410-3000 mm
Capacity with Excavator	Up to 150 m/h
Capacity with wheel loader	Up to 100 m/h

RT3230 / RT3235



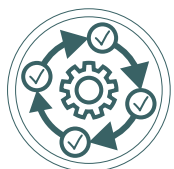
High load capacity

Designed to transport heavy materials and equipment efficiently on track.



Safe and stable

Robust construction and braking system for secure transport even in challenging conditions.



Flexible compatibility

Adapted for various track gauges and easy connection to railway vehicles.



Efficient transport solution

Optimized for fast and smooth movement of materials at worksites.

RT3230 / RT3235 – Robust, Flexible, Reliable

Rail Trailers for Safe and Efficient On-Track Transport

RT3230 and RT3235 are robust and reliable rail trailers designed to handle the transport of heavy materials and equipment on railway tracks. With high load capacity and flexible compatibility, they are ideal for projects requiring efficient logistics.

The trailers are compatible with various track gauges and easily connect to railway vehicles, enabling smooth operation across different worksites. The sturdy design, together with an effective braking system, ensures stability and safety during transport, even in demanding environments.

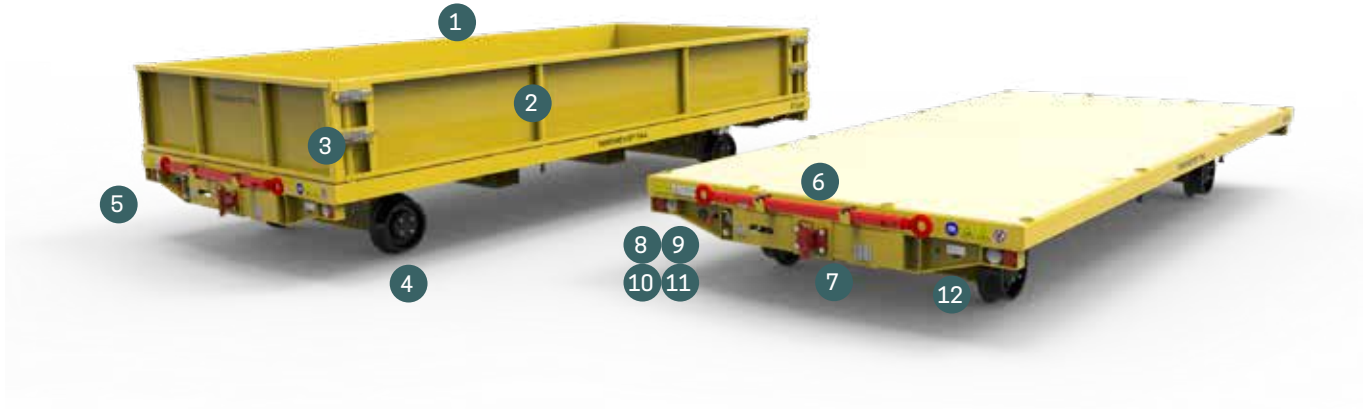
RT3230 and RT3235 are the perfect choice to optimize material handling and logistics in both railway maintenance and new construction.



Find more information about
RT3230/3235 on our website.



Technical Info



Main Components

- | | |
|----------------------------|----------------------|
| 1. Side panels | 7. Tow coupling |
| 2. Load stakes | 8. Voltmeter |
| 3. Side lock | 9. Main power switch |
| 4. Rail wheels with brakes | 10. Servo pressure |
| 5. Lighting | 11. Light switch |
| 6. Tow bar | 12. Battery charging |

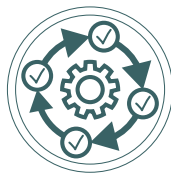
TECHNICAL DATA		
Description	RT3230	RT3235
Side panels	Yes	Yes
Weight	2685kg / 2295kg	820kg / 700kg
Length	5500mm	2500mm
Width	2560mm	1800mm
Bed height	5500mm	2500mm
Track gauge	1435mm	1435mm
Load capacity	17000kg	3500kg

RG2500 / RG3000 / RG4800



Efficient rail installation

Safe handling of continuously welded rail sections enables faster workflow.



Flexible compatibility

Adapted to suit various rail dimensions and working environments.



Robust design

Built to handle heavy loads and ensure stability under tough conditions.



Safe design

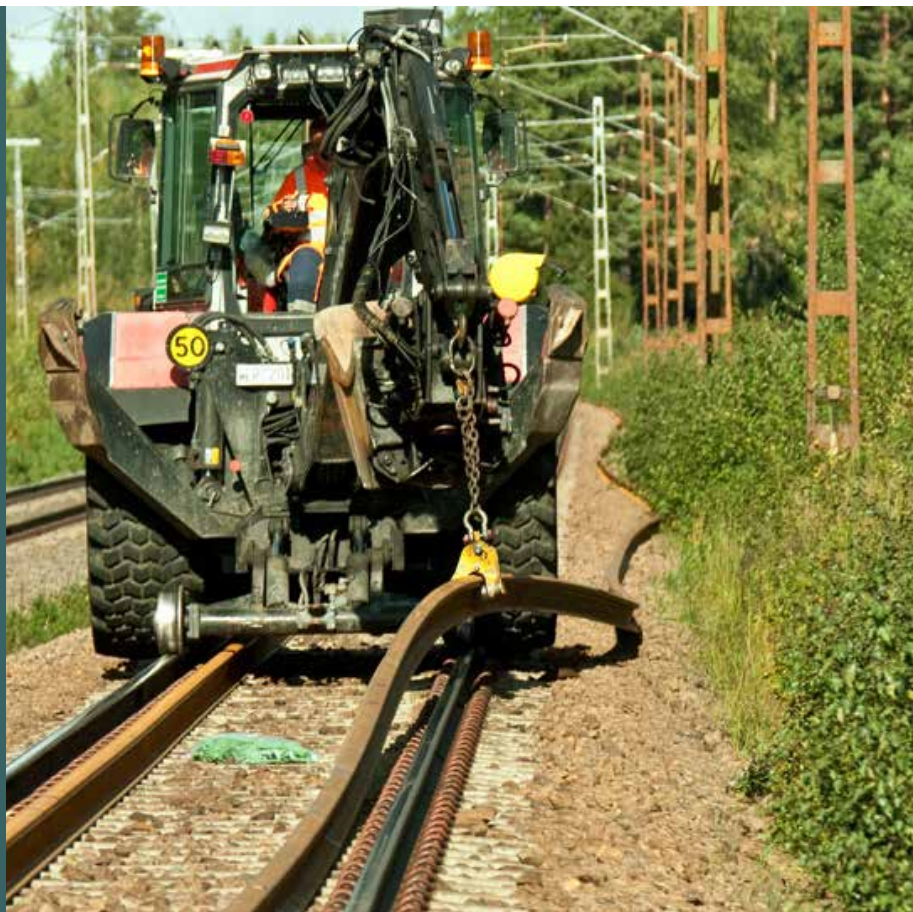
Engineered to reduce the risk of rail damage and enhance on-site safety.

RG2500 / RG3000 / RG4800 – Efficient, Robust, Safe

Reliable Rail Grabs for Continuous Welded Rail Handling

The RG2500, RG3000, and RG4800 are powerful and dependable rail grabs designed for efficient handling and installation of continuously welded rail sections. With their rugged construction and high lifting capacity, these tools ensure stability and precision—even under demanding site conditions.

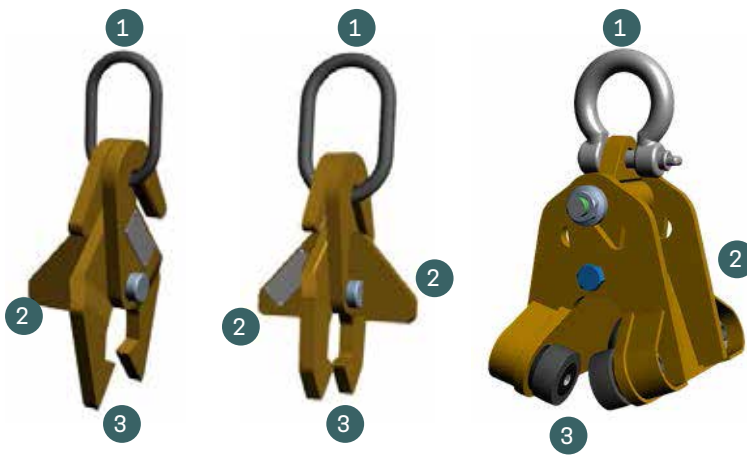
Compatible with various rail dimensions, the RG series offers flexibility for a wide range of railway projects. The safety-focused design protects both personnel and infrastructure, minimizing the risk of rail damage. With the RG2500, RG3000, and RG4800, you get a secure and effective solution for all types of rail handling operations.



Find more information about
RG2500/3000/4800 on our website.



Technical Info



Main Components

RG2500/RG3000

1. Lifting eye
2. Support wedge
3. Gripping claw

RG4800

1. Lifting eye
2. Lifting yoke
3. Guide roller

TECHNICAL DATA			
Description	RG2500 Rälssax	RG3000 Rälssax	RG4800 Rullsax
Weight	5 kg	7.1 kg	28 kg
Max Load Capacity	2500 kg	3000 kg	4800 kg
Height	270 mm	270 mm	335 mm
Width	160 mm	160 mm	310 mm
Rail Types	50 E3, 50 E4, 60 E1, 56 E1	132RE, 136RE, 141RE, TR68	Vignole Rail
Surface Treatment	Linseed oil	Linseed oil	Powder-coated RAL1004 Yellow



Rosenqvist Rail AB
Hyggesvägen 5
824 35 Hudiksvall
Sweden

Contact:
rosenqvistrail.se
info@rosenqvistrail.se
+46 650 165 05